

POCKET DOOR LOCKSET

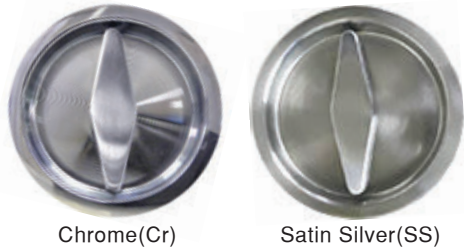


"Optimising Space Usage"

SLIDEHIDE Round Lockset (SHLK-R)

Specification:

Supply SLIDEHIDE lockset model SHLK-R for door panel thk 36 to 50mm. Lockset features include 1) hook striking action activated by safety push button 2) colour indicator to show lockset locking and unlocking status 3) thin (less than 1.8mm protrusion) cover plate against door panel surface 4) coin-open emergency unlocking function 5) no exposed lockset screw heads 6) striking plate hole size is adjustable.



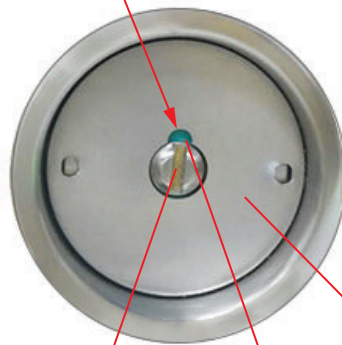
Chrome(Cr)

Satin Silver(SS)



Strike plate

Green (unlocked)
Red (locked)



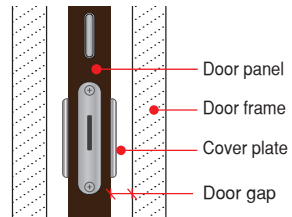
Finger pull handle

Safety push button

Hook
(activated by safety push button)



5 Very thin cover plate to prevent hitting door frame incase door gap is small (eg. pocket door applications)



1

Striking plate hole size can be adjusted anytime to secure the hook.

2

Coin-open for emergency unlocking.

3

Locked & unlocked indicator.

4

No ugly screw heads.

POCKET DOOR LOCKSET DATA SHEET			
Lockset Name	Model	Door thk (mm)	Finish
SLIDEHIDE Round Lockset	SHLK-R	36 to 50	Chrome(Cr)
			Satin Silver(SS)

SLIDE & HIDE System (S) Pte Ltd

11, Yishun Industrial Street 1, #07-99 North Spring Bizhub. Singapore 768089

Tel: +65 6369 9988 Fax: +65 6369 9977 Email: enquiry@slidehide.com.sg



POCKET DOOR LOCKSET

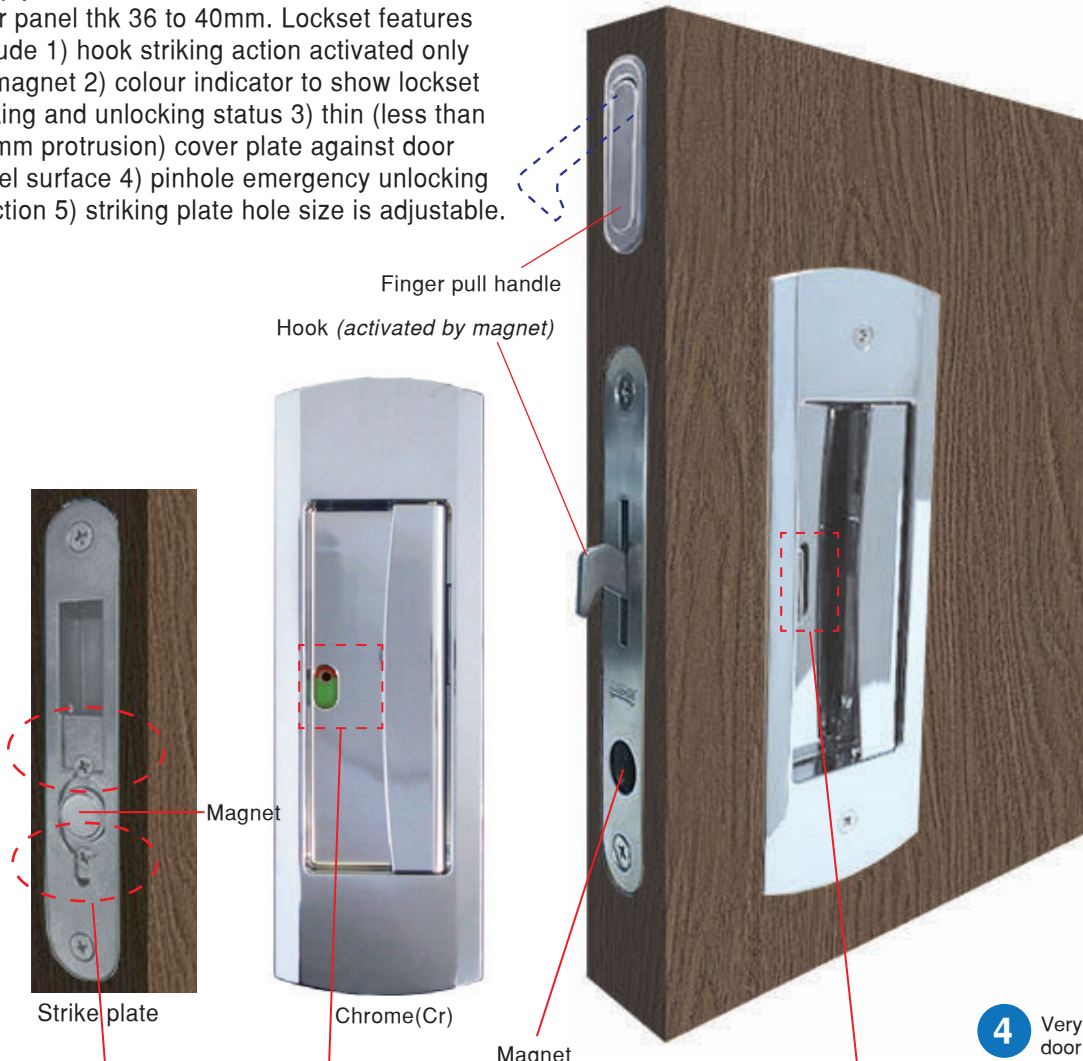


"Optimising Space Usage"

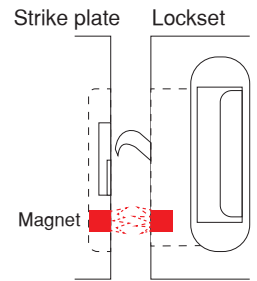
SLIDEHIDE Magnetic Lockset (SHLK-M)

Specification:

Supply SLIDEHIDE lockset model SHLK-M for door panel thk 36 to 40mm. Lockset features include 1) hook striking action activated only by magnet 2) colour indicator to show lockset locking and unlocking status 3) thin (less than 1.5mm protrusion) cover plate against door panel surface 4) pinhole emergency unlocking function 5) striking plate hole size is adjustable.



How does Lockset hook works?



"When the Lockset is near to the strike plate, the magnet will activate the hook."

1
Striking plate hole can be adjusted anytime to secure the hook.

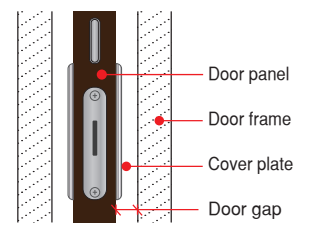
2
Pinhole button for emergency unlocking.

(Unlocked) (Locked)

3
Locked & unlocked indicator.

(Locked) (Unlocked)

4 Very thin cover plate to prevent hitting door frame incase door gap is small (eg. pocket door applications)



POCKET DOOR LOCKSET DATA SHEET			
Lockset Name	Model	Door thk (mm)	Finish
SLIDEHIDE Magnetic Lockset	SHLK-M	36 to 40	Chrome(Cr)

SLIDE & HIDE System (S) Pte Ltd

11, Yishun Industrial Street 1, #07-99 North Spring Bizhub. Singapore 768089
 Tel: +65 6369 9988 Fax: +65 6369 9977 Email: enquiry@slidehide.com.sg

